



31 March 2022

Headteacher: Mrs C Hurst BA(hons) PGCE NPQH NLE



## SPRING NEWSLETTER 2022

Dear Parents/Carers

Welcome to the spring newsletter after what has been an eventful term of exciting learning and continuing COVID illness. Let's hope the summer term is a fresh and healthy new start.

### READING CHALLENGE



Thank you for supporting our Reading Challenge Day and sending your 'little cherubs' into school in their PJs with their favourite books. The children had a fabulous day reading and sharing books with the highlight being the joining of classes to read to each other. Each class also created a high stakes reading area to enjoy reading in their classrooms.

Don't forget our Reading Rocketeers Challenge and help your child earn tokens by reading every day and recording it in their partnership book. The children can swap their tokens for some fantastic books in our Rocketeers Shop.

Thanks to those children who entered the Reading Challenge, sending in photos of being caught reading in unusual and exciting places. First prize goes to Sienna who sent in her picture taken at Harry Potter World. Sienna can choose a book of her choice in our Rocketeers Shop.

### ATTENDANCE AND PUNCTUALITY

As you know, attendance every day is essential for your child to achieve their greatest successes. Children with 100% attendance this term receive a Gold Award, 98% a Silver Award and 96+% a Bronze Award. These children will be entered into our prize draw at the end of the year. Last year's winner chose £50 worth of vouchers for Planet Bounce. What would your family choose this year if they win?

Congratulations to Demi-May for being last half term's winner and Darren for being our termly attendance winner this term with 100% attendance.

Please also remember how important punctuality is for all of our children. Arriving late means that children miss vital learning and individual contact with staff each time they are late.

### CLASS ASSEMBLIES

Thanks to all of our parents who came along to enjoy the Oak and Sycamore class assemblies this half term. It has been fantastic to be able to welcome our parents into the school once more and we hope you enjoyed the performances.

### RED NOSE DAY



Thank you for your support for Red Nose Day and for sending your children dressed in their STEM occupation costumes. All the engineers, surgeons, calculators, Rubik's cubes and scientists were truly inspirational to see on the final day of STEM week.

The children had an incredible week of hands-on discovery with various design briefs completed - from moving picture books in Year 1, moving vehicles with wheels and axles in Year 2, to planters and trellises to grow sweet peas and strawberries in Year 3. Year 4 investigated growing food in various climates and designed prototype greenhouses which they will test out with strawberry plants over the summer. Year 5 created pulley-systems based on the need to collect water from deep down in the earth in areas of drought. Finally, Year 6 did us proud by researching the lives of children in Ukraine and designing and making cushions for refugees embellished with significant Ukrainian symbols such as sunflowers, cherries and the colours of the Ukrainian flag. An added bonus was the £176.25 that was raised for the Red Nose Day charity.



## PARENT SURVEY

Thank you for sending back your completed parental survey. A summary of the main results is shown below, and we will be in contact during the new term about how we will be tackling any areas of concern.

|                         |  | Strongly Agree + Agree | Strongly Disagree + Disagree | Don't Know / Not Applicable to Me |
|-------------------------|--|------------------------|------------------------------|-----------------------------------|
| 1                       | My child is happy at this school   | 89.7%                  | 10.3%                        | 0.0%                              |
| 2                       | My child feels safe at this school   | 96.6%                  | 3.4%                         | 0.0%                              |
| 3                       | The school makes sure its pupils are well behaved  | 93.1%                  | 6.9%                         | 0.0%                              |
| 4                       | My child has been bullied and the school dealt with the bullying quickly and effectively                                       | 19.3%                  | 19.3%                        | 61.4%                             |
| 5                       | The school makes me aware of what my child will learn during the year  | 80.7%                  | 19.3%                        | 0.0%                              |
| 6                       | When I have raised concerns with the school they have been dealt with properly   | 59.3%                  | 10.2%                        | 30.5%                             |
| 7                       | If your child has special educational needs or a disability (SEND): the school gives my child the support they need to succeed | 13.8%                  | 8.6%                         | 77.6%                             |
| 8                       | The school has high expectations for my child  | 81.7%                  | 18.3%                        | 0.0%                              |
| 9                       | My child does well at this school  | 94.6%                  | 5.4%                         | 0.0%                              |
| 10                      | The school lets me know how my child is doing  | 83.1%                  | 16.9%                        | 0.0%                              |
| 11                      | There is a good range of subjects available to my child at this school   | 86.4%                  | 13.6%                        | 0.0%                              |
| 12                      | My child can take part in clubs and activities at this school  | 67.8%                  | 13.6%                        | 18.6%                             |
| 13                      | The school supports my child's wider personal development  | 62.7%                  | 30.5%                        | 6.8%                              |
| 14                      | I would recommend this school to another parent  | 78.0%                  | 18.6%                        | 3.4%                              |
| <b>Average Response</b> |  | <b>71.9%</b>           | <b>13.9%</b>                 | <b>14.2%</b>                      |

## STUDENTS



We have been hosting several year 2 BEd students from Nottingham Trent University this year. You may have seen them supporting EYFS, Y1, Y5 and Y6. As a school, we believe it is very important to support the teachers of tomorrow sharing some of the excellent practice at Glapton and gaining all those extra pairs of hands.

## COFFEE MORNING

Earlier in March, Mrs Oliver held a coffee morning for the parents and carers of children with any special educational needs. This was a lovely opportunity to meet up with other parents, support each other, share tips and ask Mrs Oliver any questions whilst relaxing with a coffee and a biscuit. Watch this space for the next coffee morning - we hope to see lots of you there.



## ROAD SAFETY

Key Stage 2 children were quizzed on road safety during the annual Road Safety Competition. They did very well, although some children still need to prioritise keeping safe in these situations. Please could you support their knowledge at home while you are out and about over the holidays. This involves learning The Green Cross Code, knowing how to cross at the traffic lights and carrying out bike safety checks.

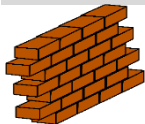
## FARNBOROUGH SPENCER ACADEMY

Mrs Hurst recently enjoyed a very informative visit to Farnborough Spencer Academy, hosted by the Principal Mr Smith. The school continues to get better and better, and Mrs Hurst saw lots of purposeful learning, really happy children and excellent behaviour. The learning plans for KS3 and KS4 are really exciting, and transition planned for the summer will be a great opportunity for our pupils. It was particularly nice for her to get into Year 7 classrooms and say hello to some former Glapton pupils. If you are still thinking about Y7 transition, we would definitely recommend arranging a visit.

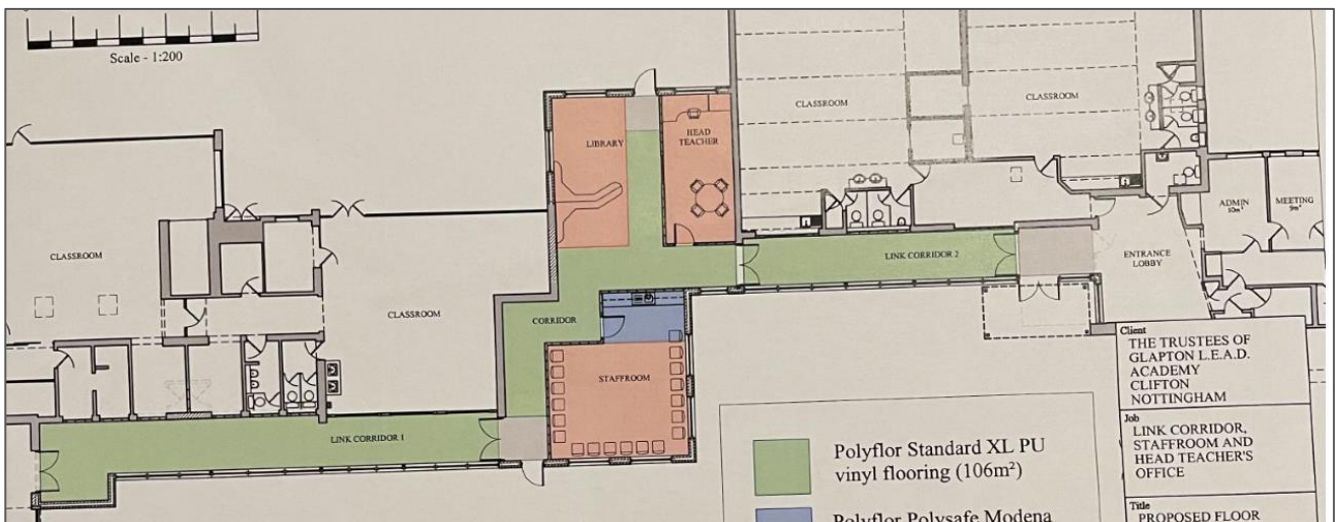


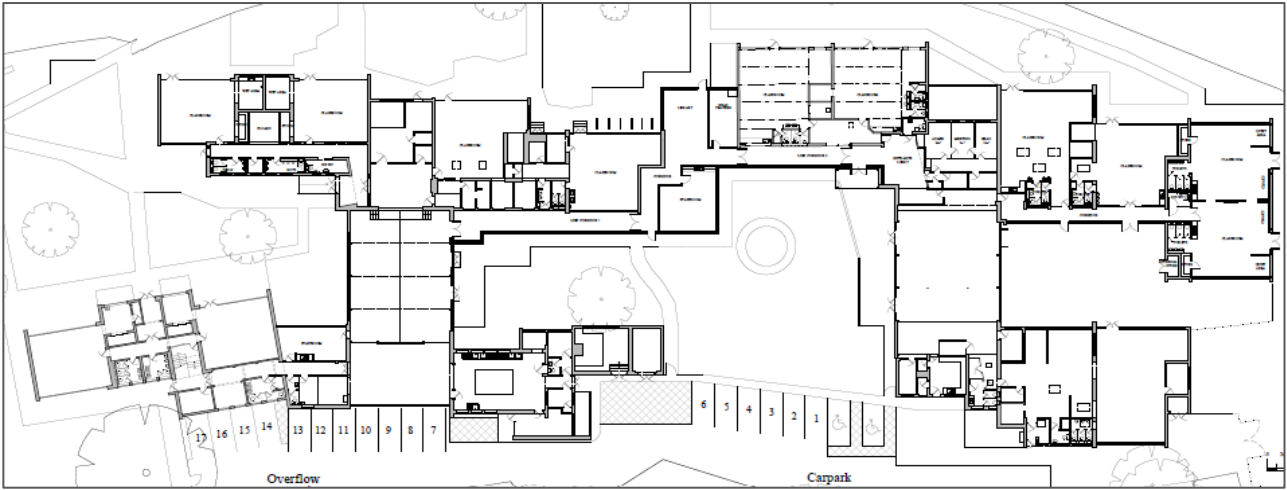
**WE ARE Proud**

## NEW BUILDING WORKS



As you can see, the new building is progressing well, with an estimated completion time of July. We are all very excited to join the two sides of the school together, and particularly to create a curious and truly valuable library for our Glapton pupils now and in the future. Below is a picture of the plans for our information. Thank you for your patience with any inconvenience caused during the building works.





### REVEREND LYDIA



Reverend Lydia has kindly been into school during this term to talk to the children about lent and of course Easter. Some children have been up to see her in the Church and more visits are planned over the summer term. We really value this connection with our local Church and also have visits planned to take the children to visit the Mosque, Gudwara and the Synagogue.

### ORCHESTRA AND MUSICIANS

Mrs Husbands organised students from Nottingham Trent University to come and play to the children in assembly recently, and they were thrilled with the inspirational live performance. Children in Y4 and Y5 also enjoyed a virtual orchestra experience this week to reinforce their own tuition. Maybe one or two will be professional musicians in the future; we certainly have lots of potential talent!



### THANK YOU CLUB

The children of Glapton never cease to amaze us and we have once again enjoyed a full and active Thank You Club for all of those children who have stayed on their team board (not broken any school rules) all term. Keep up the good work children!

### STAY AND PLAY



Mrs Eden-Smith recently organised a stay and play session for the parents of children in Walnut and Larch classes. It was great to see such a high turnout, and we hope you enjoyed your experience in your little one's classroom and got to see the exciting things they get up to. Maybe you even saw a duckling or two hatching! Another session is planned next term so we look forward to seeing you then.

### COVID ARRANGEMENTS - SUMMER TERM

You will be aware that from 1 April 2022, the government has updated the national Covid guidance, please see below.

*From 1 April, updated guidance will advise people with symptoms of a respiratory infection, including COVID-19, and a high temperature or who feel unwell, to try to stay at home and avoid contact with other people until they feel well enough to resume normal activities and they no longer have a high temperature.*

*From 1 April, anyone with a positive COVID-19 test result will be advised to try to stay at home and avoid contact with other people for 5 days, which is when they are most infectious.*

*Advice will be provided for individuals who need to leave their home when they have symptoms or have tested positive, including avoiding close contact with people with a weakened immune system, wearing a face covering and avoiding crowded places.*

Further information can be found on the links below:

- <https://www.gov.uk/government/publications/covid-19-response-living-with-covid-19/covid-19-response-living-with-covid-19>
- <https://www.gov.uk/guidance/people-with-symptoms-of-a-respiratory-infection-including-covid-19>

## SCHOOL MEALS PRICE INCREASE

As explained in our e-mail of 18 March, we have received confirmation from Nottingham City Council's catering team that they will be increasing the cost of a school meal from £2.25 to £2.30 with effect from 1 April 2022. This decision has been taken as a direct result of the steep cost of living increases experienced recently, including the cost of food supplies, ingredients and transportation.

We are grateful that Mrs Sulley and the catering team at Glapton continue to go above and beyond in providing a varied, nutritious menu which a huge majority of our children enjoy on a daily basis. Meal Manager and the School Gateway app will be updated to reflect this change from 1 April.

## DATES FOR YOUR DIARY

|                                  |  |
|----------------------------------|--|
| Tuesday 19 April 2022            | School reopens   |
| Thursday 28 April 2022           | Willow Class Assembly  |
| Monday 2 May 2022                | May Day Bank Holiday   |
| Thursday 5 May 2022              | Juniper Class Assembly                                       |
| Monday 9 May 2022                | Key Stage 2 SATS begin - ensure your child attends every day |
| Friday 27 May 2022               | Additional Bank Holiday for the Queen's Jubilee              |
| Monday 30 May-Friday 3 June 2022 | Half Term Week   |
| Monday 6 June 2022               | School Reopens   |



Dates for the remainder of the summer term are in your partnership book.

Wishing you a happy and peaceful Easter break and hoping to see you all fit and most importantly healthy when you return.

Yours sincerely

A handwritten signature in blue ink, appearing to read 'C Hurst'.

**Mrs C Hurst BA (Hons) PGCE NPQH NLE**  
**Headteacher**